



## BEBON INTERNATIONAL CO.,LTD.

TEL :0086-371-86151627

0086-371-86151827

E-mail:bb@bebonchina.com

Web:<http://www.bebonchina.com>

ADD:ROOM 2801 B# INTERNATIONAL ENTERPRISE  
CENTER, NONGYE ROAD,ZHENGZHOU,450000 CHINA





## Company

Henan BEBON international co.,ltd , located in Zhengzhou ,Henan province of China, is specialized in exporting steel products. Based on the domestic rich product resources and professional research on international market, BEBON's service has already spread many countries in Europe,North America, Southeast Asia, Middle East, South America, Africa, and so on.

We have three big warehouses. The first one is in Zhengzhou, which mainly stores profile steel, the quantity of ex-stock is about 4000tons. The another two are in Shanghai and Tianjin, which mainly store steel plates ,the quantity is about 6500tons. Besides, the steel product range in stock is complete, the reserve is big, and the delivery can be immediate.

We have built the long-term strategy cooperation with several chinese big steel mills, like Shou steel (in Beijing and Qinhuangdao) , Bao steel (in Shanghai), Wuyang steel (in Henan), Han steel (in Hebei), so we can carry on the production completely defer to the customers' request.

Our service is the "one-stop" work style. We have our pre-treatment factory and processing factory, which can offer the service such as cutting, welding, drilling holes, ball blasting, derusting, painting, galvanizing etc. in very cost price.

Good quality and fast delivery are the tenet of our work. All the marketing representatives of Bebon will do their best to solve the problems and find the solution for you. All my dear friends, you are very welcome to visit us.

Bebon always is your home in China!



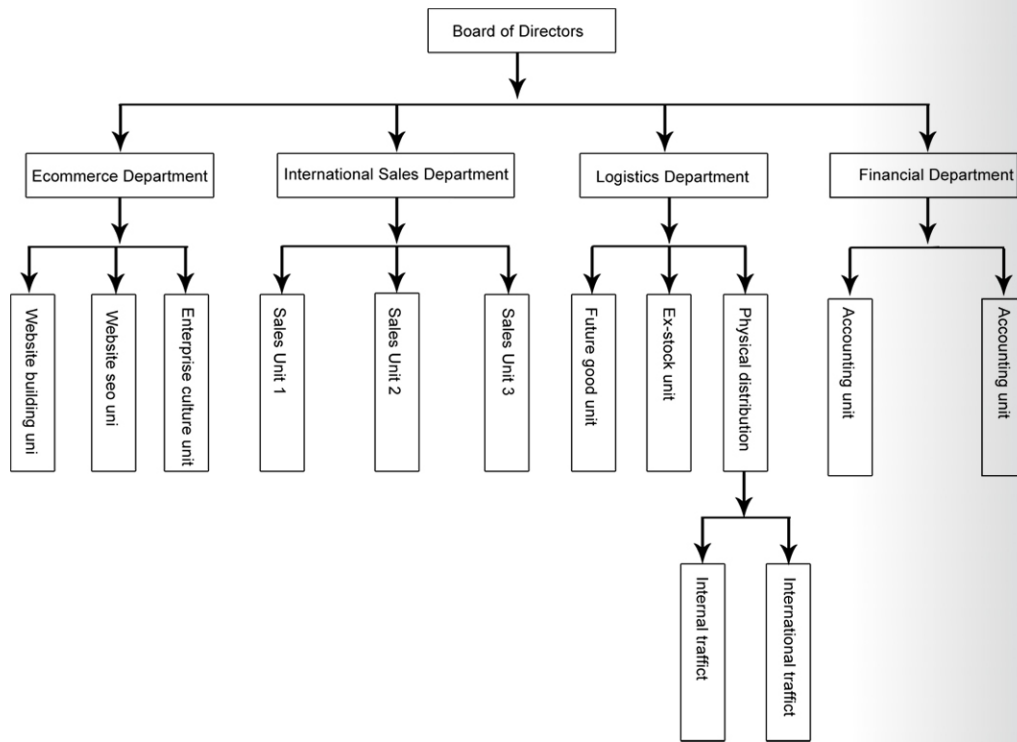
## Catalog

- Carbon and low alloy steel
- Steel for Boilers and Pressure Vessels
- Steel for gas cylinders and gas vessels
- Steel For Ship Building
- Simple pressure vessels steel
- General purpose structural steels
- High carbon Steel
- High yield strength cold forming steels
- Structural steels with enhanced resistance to atmosphere corrosion
- High Yield Steel
- Weldable normalized fine grained pressure vessel steels
- Steel for large diameter pipes
- General Construction Steel
- Steel Resistant to Atmospherical Corrosion
- Fine-grain structural steels, normalised rolled
- Steel with Cr., Mo., Cr-Mo.
- Boiler steels
- Steel for Welded Tubes
- Fine-grain structural steels, thermomechanically rolled
- Stamping and cold forming steels
- High strength steels for cold-forming, normalised





## Company Organizations



## Company cultural

**Our Vision:** To be the leader of China's steel industry and become the trusted partner for all of our clients.

**Our Mission:** To serve the interest and the needs of the public, as well as of our clients, BEBON International will hold the belief "product quality and service foremost, sincerity and superior quality" forever.

**Our tenet:** Pursue customer satisfaction and ensure the best quality products

**Our values:** Enhance trust, insist quality and integrity, and consider for the customer.

We value the trust we have earned and will demonstrate integrity, respect and the highest level of quality to enhance the trust of our clients. Considering questions from customer's angle and thinking well of their opinions, to make our customers feel easy and, at the same time, satisfied with our services.

## Supply Capacity/advantage

1. product category: steel plate, steel pipe, flat bar, profile steel, stainless steel

2. Product Specification Range mm:

steel plate(Thickness:1.5--450, Width:1200--4200, Length: 3000--18000)

seamless steel pipe(Diameter:10.3mm--965.2mm, Wall thickness:1.24mm --59.54mm)

Welded steel pipe( Diameter:32mm--2220mm, Wall thickness:2mm --60mm)

Stainless steel sheet/plate (Thickness:0.2mm--120mm, Width:1219mm--2000mm)

3. Stock monthly : We have two three warehouses-Zhengzhou(which mainly store profile steel, the quantity of ex-stock is about 4000tons),shanghai(which mainly store steel plate and stainless steel, the quantity of ex-stock is about 5500tons ) Tianjin (which mainly store steel pipe and pipe fitting , the quantity is about 4500tons)

4. Service:

(1) Heat treatment(Normalizing, Tempering, Annealing, Normalizing & Tempering, Quenching and high temperature tempering)

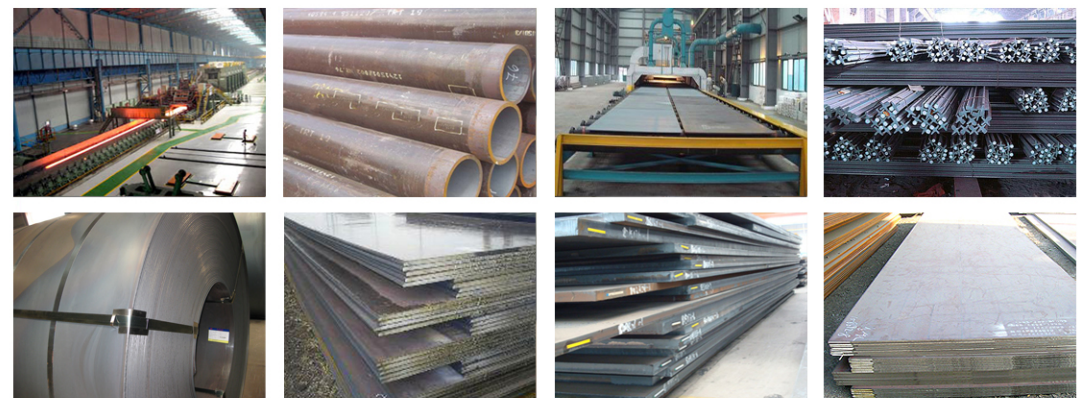
(2) Pre-treatment on the surface of steel plate: blasting and shop primed in ISO SA2.5 standard

(3) Test (UT, Impact test, HIC test, SSC test, Chemical Element Analysis, Performance Test, Magnetic powder test, DWTT, PWHT )

(4) Approved by (ISO9001 )

(5) Other service: Cutting(NC Cutting), drill, machining, welding, Galvanization

(7) Cap and Bevel at the end of the steel pipe, painting and PE outside of the steel pipe, PL1 and PL2 test



## Successful cases

As many persons know there is many steel mills in china who is famous for it's STAINLESS STEEL . So in order to enrich Bebon's service, We also deal with stainless steel product.

For more information about stainless steel, please refer to our website:

<http://www.stainless-steel-plates.com/>. In July , 2011. We met about business partner --OAO

'KERAMIN' from BELARUS . Our this partner is a great and famous manufacture in European in ceramic tile industry.

We exported 217 mt stainless steel to them. Finished the order during 2 months, did transportation by 3 times according to customer's requirement. We provided them with our ex-stock goods which manufactured in Feb.2011.

The following is the Mill Test Certificate on this order

联众（广州）不锈钢有限公司

LIANZHONG STAINLESS STEEL CORPORATION

品质证明书

# INSPECTION CERTIFICATE

客户: 广州联众钢铁有限公司  
Customer: Guangzhou Lianzhong Steel Co., Ltd.

产品编号: 0101010  
Product: 冷轧不锈钢带  
规格钢种: Q/2366 2-2009 L1  
Specification/Steel Grade: Q/2366 2-2009 L1

品质证书号: B10012043  
Certificate No. B10012043

日期: 2011-2-5  
Date: 2011-2-5

页次: 1/1  
Page: 1/1

产品编号 Product ID	化学成分 Chemical Composition											力学试验 Mechanical Test			硬度试验 Hardness Test		弯曲试验 Bend Test	
												抗拉强度 Tensile Strength			布氏硬度 Brinell Hardness			
												屈服强度 Yield Strength	抗拉强度 Tensile Strength	伸长率 Elongation	布氏硬度 Brinell Hardness	洛氏硬度 Rockwell Hardness		
Min.	C	Si	Mn	P	S	Ni	Cr	Co	N			MPa	MPa	%	HBS	HRC		
Max.	0.10	1.00	8.00	0.060	0.030	1.00	13.50	1.00	0.200			205	515	35	97			
B251631138	0.014	0.30	8.96	0.037	0.002	1.03	14.21	1.33	0.153			201	515	35	97			
B251631138C	0.014	0.30	8.96	0.037	0.002	1.03	14.21	1.33	0.153			201	515	35	97			
B251633328	0.015	0.37	9.54	0.045	0.003	1.02	14.20	1.33	0.164			201	515	35	97			
B251633328C	0.015	0.37	9.54	0.045	0.003	1.02	14.20	1.33	0.154			201	515	35	97			
B25163391A	0.085	0.48	10.04	0.044	0.002	1.04	14.25	1.39	0.146			201	515	35	97			
B25163391B	0.085	0.48	10.04	0.044	0.002	1.04	14.25	1.39	0.146			201	515	35	97			
B25163391C	0.085	0.48	10.04	0.044	0.002	1.04	14.25	1.39	0.146			201	515	35	97			
B25163392A	0.085	0.48	10.04	0.044	0.002	1.04	14.25	1.39	0.146			201	515	35	97			
B25163392B	0.085	0.48	10.04	0.044	0.002	1.04	14.25	1.39	0.146			201	515	35	97			
B25163392C	0.085	0.48	10.04	0.044	0.002	1.04	14.25	1.39	0.146			201	515	35	97			

1. 证明本表所列产品，均按材料规格制造及测试，并符合规定之要求。  
We hereby certify that material described herein has been manufactured and tested with satisfactory results in accordance with the requirement of the above material specification.

2. 本产品经检验无辐射污染。  
We hereby state that the material described above has been detected with free irradiation.

3. Inspection and assay measurement satisfactory.

4. 本报告不得随意复制。  
The report can only be reproduced in full.

品保处长: Manager of Quality Assurance Department

廖志华

## Successful cases

The steel for shipbuilding is Bebon's main product. Weremarks shipbuilding steel as our No.1 important product. Just because of reason, and also in order to meet different requirement. We build a Pre-treatment Line with one of our business partner in Shanghai.

Pre-treatment mean " Shot blasting and shop primed" on the shipbuilding steel plates surface. Our this service satisfy many shipyard customers. They can get " one-step" service from us.

For more information about shipbuilding steel, please refer to our website: [www.shipbuilding-steel.com](http://www.shipbuilding-steel.com)

In March 2011, we exported 130 tons shipbuilding steel to JAYA Shipyard in Singapore.

The following picture is one piece of Mill Test Certificate on this order.

订货单位 CUSTOMER		新余市鑫源贸易有限公司		产品名称 PRODUCT		棒状用结构钢		车号 TRAIN NO.		虚拟发货		证书编号 CERTIFICATE NO.		XBI-014810-1-1							
收货单位 PURCHASER		新余市鑫源贸易有限公司		标准 SPECIFICATION		QW Rules		数量合计 QTY		49		签发日期 DATE OF ISSUE		2011-05-24							
合同号 CONTRACT NO.		102011050148		许可证号 LICENSE NO.				超声波探伤 UT:		重量合计 TOTAL WT		116.550		发货日期 DATE OF DELIVERY							
序号 NO		规格 SIZE		材料牌号 MATERIAL GRADE		尺寸及重量 DIMENSION & WEIGHT		化学成分 % CHEMICAL COMPOSITION		拉伸试验 TENSILE TEST		冲击功 IMPACT TEST		交货状态 DELIVERY CONDITION		客户订单号 CUSTOMER ORDER NO.					
NO		ROLL NO.		HEAT NO.		STEEL GRADE		厚度 THICK		宽度 WIDTH		长度 LENGTH		数量 QTY		重量 WEIGHT					
mm		mm		mm		kg		C Si Mn S P Al Nb N		Y S T S E L		冷冲 PLATE		温度 TEMP		Ave					
mm		mm		mm		kg		Cr Ni Cu Co Mo V Ti		ReH ReL		冲击功 J		1 2 3 AVE		1 2 3 AVE					
1	Z1-24923	J1B-05991A	NK36	18	2430	9144	4	12.600	0.21 0.02 0.28 0.005 0.012 0.005 0.005 0.005	128 7 19 18 27	430 525 22.0	L A	0	251 233 215 235	TW						
2	Z1-24941	J1B-05991A	NK36	18	2430	9144	5	15.750	0.21 0.02 0.28 0.005 0.012 0.005 0.005 0.005	128 7 19 18 27	425 505 24.5	L A	0	319 182 208 184	TW						
3	Z1-25023	J1B-04827A	NK36	18	2430	9144	4	12.600	0.19 0.02 0.24 0.005 0.012 0.005 0.005 0.005	128 7 19 18 27	450 525 28.5	L A	0	380 196 177 187	TW						
4	Z1-25271	J1B-05026A	NK36	12	2430	9144	18	15.750	0.19 0.02 0.24 0.005 0.012 0.005 0.005 0.005	136 4 15 25 25	475 565 24.5	L A	0	155 230 175 200	TW						
5	Z1-25278	J1B-05026A	NK36	12	2430	9144	12	16.200	0.19 0.02 0.24 0.005 0.012 0.005 0.005 0.005	136 4 15 25 25	450 505 29.5	L A	0	184 177 197 185	TW						
6	Z1-25279	J1B-05210A	NK36	12	2430	9144	6	10.500	0.19 0.02 0.24 0.005 0.012 0.005 0.005 0.005	133 5 21 26 25	470 555 29.5	L A	0	188 209 184 193	TW						
7																					
8																					
9																					
10																					
备注 REMARKS																					
CERTIFICATE OF APPROVAL NO.		AMN-4409		注 释 NOTES		①位置方向 LOCATION AND ORIENTATION : L=纵向 TRANS L=横向 LONGI. ②试样尺寸 SAMPLE SIZE: A10x10x5; B10x7.5x5; C10x5 D4x5; D10x2.5x5 ③Z向表面减薄率 THROUGH THICKNESS REDUCTION IN AREA. ④交货状态 STATE OF DELIVERY: N=正火 NORMALIZED ⑤淬火淬硬 T=淬火 TEMPERED F=退火 ANNEALED ⑥密封型态 CONTROLLED ROLLED TW=热连轧 AS=热轧 ASR=冷轧												质量检验专用章 QUALITY INSPECT. STAMP			
SURVEYOR				兹证明该材料系按照已获认证之工艺进行生产，并按照国家规定的要求进行了测试，取得满意的结果。 The material quality has been controlled by approved process and has been satisfactorily tested in accordance with QW Rules for Classification. The products are marked in accordance with the survey arrangement authorized by QW in USA No. B-3342 which is controlled by regular auditing.														PRINTER			
DATE:		2011-5-24		制表 TABULATOR:		李 芸														PRINTER	



## Successful cases

HENAN BEBON INTERNATIONAL CO.,LTD

Based on the domestic rich product resources and the rich experience in steel industry. BEBON's service has already spread many countries in Europe, America, Southeast Asia, Middle East, South America, Africa, etc.

Now, we show some of our customer reference. December, 2010 We cooperated with CAT MINH company in VIETNAM, taking part in one project. This project use our about 304 tons steel plates. The grade of these steel plates is S355J2WP. This material is a kind of weather resistant steel in European standard.

More information about weather resistant steel, please refer to our special website: [www.corten-a-b.com](http://www.corten-a-b.com)

The following picture is one piece of the Mill Test Certificate on this project.

<b>武汉钢铁股份有限公司</b> WUHAN IRON & STEEL COMPANY LIMITED		<b>产品质量证明书</b> CERTIFICATE OF PRODUCT QUALITY		地址: 中国·武汉·青山 ADDRESS: (CHINA) WUHAN, P.R.C. 邮编: 430083 POST CODE: 430083 电话: (027) 86894499 TEL: (027) 86894499																																																																																																																			
订货单位: 上海坤宝钢铁贸易有限公司 ORDER UNIT: SHANGHAI KUNBAO IRON & STEEL TRADING CO., LTD.		产品名称: 耐候钢板 PRODUCT: WEATHER RESISTANT STEEL PLATE		规格: 1500X750X12000 SPECIFICATION: 1500X750X12000																																																																																																																			
收货单位: 上海坤宝钢铁贸易有限公司 RECEIVING UNIT: SHANGHAI KUNBAO IRON & STEEL TRADING CO., LTD.		订单编号: QH00605A ORDER NO.: QH00605A		证明书编号: 10122200057 CERTIFICATE NO.: 10122200057																																																																																																																			
技术条件: EN10025-5 S355J2WP TECHNICAL CONDITION: EN10025-5 S355J2WP		客户编号: 43006001 CUSTOMER NO.: 43006001		结算单号: 10122200057 SETTLEMENT NO.: 10122200057																																																																																																																			
检验: 武钢检验 (WISCO INSPECTION) INSPECTION: WISCO INSPECTION		数量: 3 QUANTITY: 3		合同号: 10122200057 CONTRACT NO.: 10122200057																																																																																																																			
<table border="1"> <thead> <tr> <th rowspan="2">项目</th> <th rowspan="2">产品序号</th> <th colspan="3">规格及重量</th> <th rowspan="2">炉号</th> <th rowspan="2">钢卷号</th> <th rowspan="2">检验批号</th> <th colspan="10">化学成分</th> <th rowspan="2">力学性能</th> <th rowspan="2">*BA 等级</th> </tr> <tr> <th>厚度</th> <th>宽度</th> <th>长度</th> <th>重量</th> <th>T</th> <th>C</th> <th>Si</th> <th>Mn</th> <th>P</th> <th>S</th> <th>Al</th> <th>Ni</th> <th>Cr</th> <th>Ti</th> <th>Mo</th> <th>V</th> <th>Nb</th> <th>As</th> <th>Se</th> </tr> </thead> <tbody> <tr> <td>01</td> <td>HJG3240746</td> <td>3.00</td> <td>1500</td> <td>6000</td> <td>1</td> <td>0.212</td> <td>B91075</td> <td>0215009</td> <td>A</td> <td>7</td> <td>36</td> <td>42</td> <td>86</td> <td>15</td> <td>31</td> <td>24</td> <td>42</td> <td>0.007</td> <td>0.003</td> <td>1.46</td> <td>0.011</td> <td>0.3</td> <td>520</td> <td>27</td> </tr> <tr> <td>02</td> <td>HJG3240752</td> <td>4.00</td> <td>1500</td> <td>6000</td> <td>677</td> <td>191.320</td> <td>B91075</td> <td>0215010</td> <td>A</td> <td>7</td> <td>36</td> <td>42</td> <td>86</td> <td>15</td> <td>31</td> <td>24</td> <td>42</td> <td>0.007</td> <td>0.003</td> <td>1.46</td> <td>0.011</td> <td>0.3</td> <td>520</td> <td>27</td> </tr> <tr> <td>03</td> <td>HJG3240756</td> <td>5.00</td> <td>1500</td> <td>6000</td> <td>8</td> <td>2.826</td> <td>B91075</td> <td>0215011</td> <td>A</td> <td>7</td> <td>36</td> <td>42</td> <td>86</td> <td>15</td> <td>31</td> <td>24</td> <td>42</td> <td>0.007</td> <td>0.003</td> <td>1.46</td> <td>0.011</td> <td>0.3</td> <td>520</td> <td>27</td> </tr> </tbody> </table>						项目	产品序号	规格及重量			炉号	钢卷号	检验批号	化学成分										力学性能	*BA 等级	厚度	宽度	长度	重量	T	C	Si	Mn	P	S	Al	Ni	Cr	Ti	Mo	V	Nb	As	Se	01	HJG3240746	3.00	1500	6000	1	0.212	B91075	0215009	A	7	36	42	86	15	31	24	42	0.007	0.003	1.46	0.011	0.3	520	27	02	HJG3240752	4.00	1500	6000	677	191.320	B91075	0215010	A	7	36	42	86	15	31	24	42	0.007	0.003	1.46	0.011	0.3	520	27	03	HJG3240756	5.00	1500	6000	8	2.826	B91075	0215011	A	7	36	42	86	15	31	24	42	0.007	0.003	1.46	0.011	0.3	520	27
项目	产品序号	规格及重量			炉号			钢卷号	检验批号	化学成分										力学性能	*BA 等级																																																																																																		
		厚度	宽度	长度		重量	T			C	Si	Mn	P	S	Al	Ni	Cr	Ti	Mo			V	Nb	As	Se																																																																																														
01	HJG3240746	3.00	1500	6000	1	0.212	B91075	0215009	A	7	36	42	86	15	31	24	42	0.007	0.003	1.46	0.011	0.3	520	27																																																																																															
02	HJG3240752	4.00	1500	6000	677	191.320	B91075	0215010	A	7	36	42	86	15	31	24	42	0.007	0.003	1.46	0.011	0.3	520	27																																																																																															
03	HJG3240756	5.00	1500	6000	8	2.826	B91075	0215011	A	7	36	42	86	15	31	24	42	0.007	0.003	1.46	0.011	0.3	520	27																																																																																															
合计 TOTAL: 数量 QTY: 678, 重量 WEIGHT: 191.320 T																																																																																																																							
备注: 1. 承压管与一般管混用时, 一律按一般管保证 REMARK: 1. WHEN LINE PIPES FOR PRESSURE SER VICE AND FOR ORDINARY ARE USED IN THE MIXED CONDITIONS, THE QUALITY INSURANCE SHOULD BE TAKEN IN THE ORDINARY ONES 2. 运输装卸损坏不在检查范围内 2. THE PIPES DAMAGED DURING TRANSPORTATION, LOADING AND UNLOADING ARE NOT WITHIN THE SCOPE OF INSPECTION																																																																																																																							
检验员: 吴元根 INSPECTOR: 吴元根 发货员: 吴元根 DELIVERY PERSON: 吴元根																																																																																																																							

## Successful cases

Bebon's product is not only steel plates, but also some shaped steel. Like flat bar, steel pipe, angle steel, bulb steel bar and so on.

In January, 2011. We exported about 60 tons Rectangular Tube to Indonesia. Our customer is PT KERETA API. We have great advantage in weld and seamless steel pipe in ASTM A106, A53, API standard.

For more information about our steel pipe product. Please refer to our website: <http://www.steel-tube-steel-pipe.com>.

The following picture is the Mill Test Certificate on this order:

		<b>合肥紫金制管有限公司</b> 产品质量证明书 MILL TEST REPORT											
订货单位: 河南贝邦进出口贸易有限公司 BUYER: 河南贝邦进出口贸易有限公司		货物名称: 矩形钢管 DESCRIPTION: RECTANGULAR											
质量书编号: Q.T.NO.: HFZJ11011204		故为本单位制造之钢管, 业经本公司质量管理部门根据标准技术条件检验合格, 特发此证 THIS IS TO CERTIFY THAT IN ACCORDANCE WITH THE RELEVANT SPECIFICATIONS AND CONTRACTS, THE STEEL PIPES AND TUBES MANUFACTURED FOR YOUR UNIT WERE TESTED QUALIFIED BY OUR QUALITY CONTROL DEPARTMENT. 检查依据: S355JR 按理论计算, 合计 250 根, 3000 米, 63.44 吨 THE PIPES AND TUBES ARE TESTED ACCORDING TO S355JR AND COUNTED NOMINALLY AMOUNT 250 PCS, LENGTHS 3000 METERS, 63.44 TONS											
材质	炉号	规格	支数	长度	重量	母材化学成分 (MATERIAL CHEMICAL COMPOSITION)				母材物理性能 (MATERIAL MECHANICAL PROPERTIES)			
S355JR	11N03278	150X75X6X12000	250	3000	63.44	C	Mn	P	S	Si	屈服点 (MPa)	抗拉强度 (MPa)	伸长率 (%)
						0.15	0.003	1.46	0.011	0.3	520	520	27
说明: 1. 承压管与一般管混用时, 一律按一般管保证 NOTE: 1. WHEN LINE PIPES FOR PRESSURE SER VICE AND FOR ORDINARY ARE USED IN THE MIXED CONDITIONS, THE QUALITY INSURANCE SHOULD BE TAKEN IN THE ORDINARY ONES 2. 运输装卸损坏不在检查范围内 2. THE PIPES DAMAGED DURING TRANSPORTATION, LOADING AND UNLOADING ARE NOT WITHIN THE SCOPE OF INSPECTION													
负责人: 吴元根 PERSON IN CHARGE: 吴元根		检验员: 吴元根 INSPECTOR: 吴元根		发货员: 吴元根 DELIVERY PERSON: 吴元根		发货日期: 2011.01.12 DATE: 2011.01.12							

## ISO International Accreditation



## Cooperative partner



## Top Sales



■ Name: Sabrina Liu ■ E-mail: [sabrina@bebonchina.com](mailto:sabrina@bebonchina.com) ■ skype: bebonchina

Sabrina liu--" I believe there is no impossibility as long as you treat your customers and your work as important as your life "



■ Name: Jim Zhao ■ E-mail: [jim@bebonchina.com](mailto:jim@bebonchina.com) ■ skype: james-bebon

I have been working in the international business more than 7 years, having a lot of experience in dealing with steel export. Expect to work with you, my friend! I will bring you something better than you expect!



■ Name: Carrie He ■ E-mail: [carrie@bebonchina.com](mailto:carrie@bebonchina.com) ■ skype: beboncarrie

Who have more than 5 years International steel trade experience. Well know steel industry, foreign trade procedures and international practice. If you need any help of steel, please just talk to her.



■ Name: Kevin Zhang ■ E-mail: [kevin@bebonchina.com](mailto:kevin@bebonchina.com) ■ skype: bebonkevin

Kevin is responsible for steel plate and steel pipe from the sales department, Please contact me if you have any question about steel plate or steel pipe, your contentment that is what we pursue.



■ Name: Summer Song ■ E-mail: [bebonsummer@bebonchina.com](mailto:bebonsummer@bebonchina.com) ■ skype: bebonsummer

Summer Song bebonsummer@bebonchina.com Believe in yourself! Lowest Price--Fast Delivery --Best Quality.



■ Name: Sophia Zhao ■ E-mail: [bebonsophia@bebonchina.com](mailto:bebonsophia@bebonchina.com) ■ skype: bebonsophia

Sophia zhao--Best quality, best price, efficient & timely service for our win-win cooperation in fresh 2012.



■ Name: Lotus Li ■ E-mail: [lotus@bebonchina.com](mailto:lotus@bebonchina.com) ■ skype: bebonlotus

An cautious, optimistic, warmhearted, and responsible woman, will offer you the competitive price, high quality steels for you and will do the best to support you. So any need about the steel plate and sheet, please contact me!